

THE SHORT DISC HARROW
FRUIT OF A LONG EXPERIENCE



TRAILED VERSION

Any Maxidisc II can be transformed into trailed by just mounting the Trail Kit. The draw bar is mounted right on the three point linkage of the Maxidisc II and it offers a category II/III linkage on the lifting arms of the tractor. Its height can be easily adjusted by means of the turnbuckle on the third point. The wheel chassis is also mounted directly at the rear of the main frame and features hydraulic suspension as well as hydraulic or pneumatic brakes.



GC VERSION

Designed for tractors with HP over 250, Maxidisc II GC is available at working widths between 7 to 9 metres. In order to assure both its storage and transport on the road, the Maxidisc II GC is equipped with lateral folding. Thanks to its memory system, all you have to worry about it's taking the most out of your crops, since it's adjusted and returns to the previously established working width, as well as the angle of the discs placed in the frame is restored after the headstock maneuvers.



MAXIDISC II MOUNTED	MAXIDISC-II 250	MAXIDISC-II 300	MAXIDISC-II 350	MAXIDISC-II 400-P	MAXIDISC-II 450-P	MAXIDISC-II 500-P	MAXIDISC-II 550-P	MAXIDISC-II 600-P
Working width	2,40	3	3,50	4	4,50	5	5,50	6
Transport width	2,70	3,05 / 3,30 (1)	3,70			2,55		
Recommended Power (HP)	80-100	90-120	110-140	130-160	150-180	170-200	180-220	200-250
Discs	20	22	26	30	34	38	42	46
Weight with standard roller (20"/24")	1.770/2.020	1.960/2.235	2.255/2.580	2.425/2.975	2.925/3.350	3.010/3.710	3.560/4.085	3.885/4.460

(1) Standard with 3.00 m roller. Optional 3.3 m roller at the same price. Indicate when ordering

MAXIDISC II TRAILED	MAXIDISC-II 400-P	MAXIDISC-II 450-P	MAXIDISC-II 500-P	MAXIDISC-II 550-P (1)	MAXIDISC-II 600-P (1)
Working Width	4	4,50	5	5,50	6
Transport Width			2,55		
Recommended Power (HP)	130-160	150-180	170-200	180-220	200-250
Discs	30	34	38	42	46
Weight with standard roller (20"/24")	3.425/3.975	3.925/4.350	4.010/4.710	4.560/5.085	4.885/5.460

MAXIDISC II GC	MAXIDISC-II 700P-GC	MAXIDISC-II 800P-GC	MAXIDISC-II 900P-GC (*)
Working Width	7	8	9
Transport Width		3,02	
Recommended Power (HP)	200-250	230-280	240-300
Discs	54	62	70
Weight with standard roller (20"/24")	6.900/7.650	7.500/8.400	8.150*

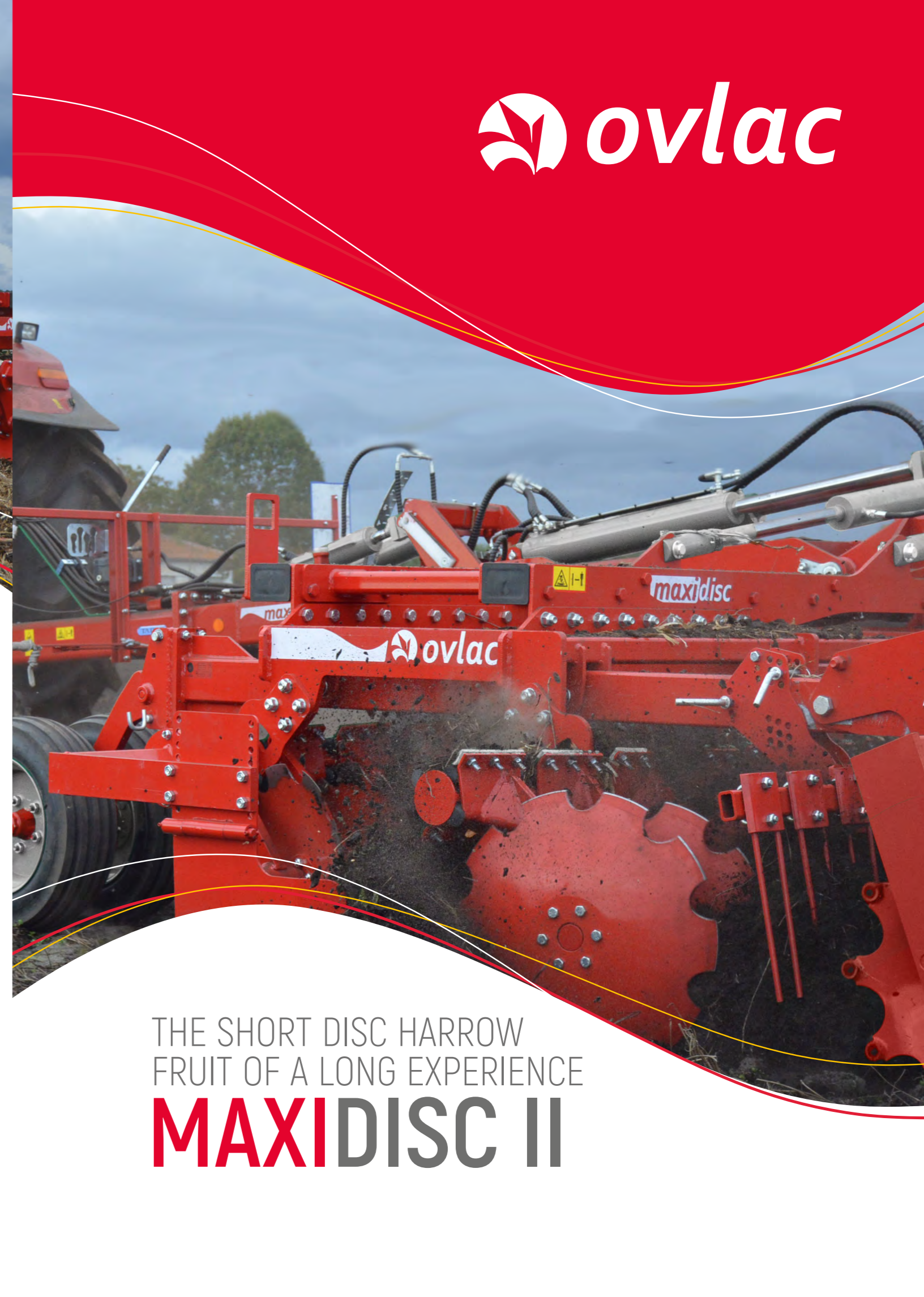
*Only 20" discs
(1) Not to be equipped with Spring roller nor V-Profile roller.



Polígono Industrial, P-163 / 165
34200 Venta de Baños
Palencia / España
Tel.: +34 979 76 10 11
Fax: +34 979 76 10 22
comercial@ovlac.com
www.ovlac.com



SCAN ME



THE SHORT DISC HARROW
FRUIT OF A LONG EXPERIENCE
MAXIDISC II

MAXIDISC II

THOUGHT AND DESIGNED FOR THE MOST DEMANDING



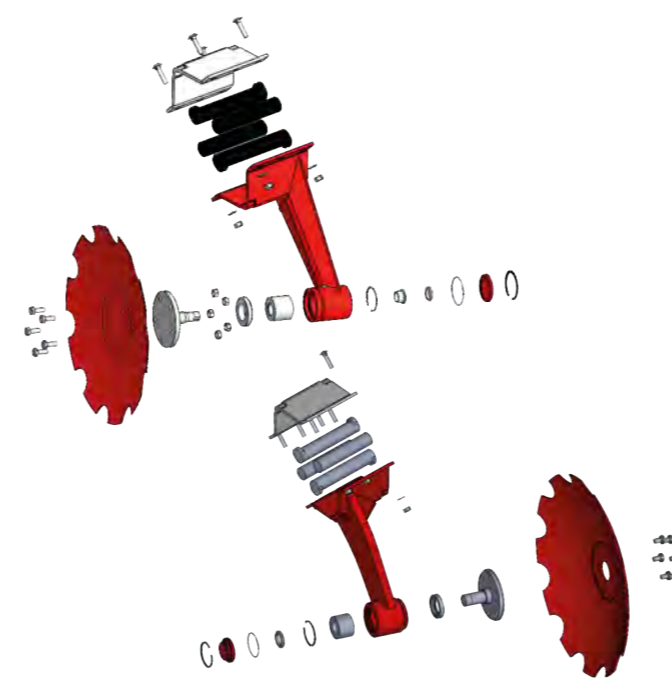
MOUNTED VERSION



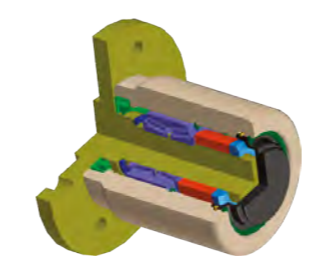
The Maxidisc II offers a solid structure calculated to stand the high forces derived from the use of 24" discs as well as big tractors. Category II and III linkage.



Discs are mounted on independent tines so that only the disc meeting an obstacle will trip up without affecting any other neighboring discs. This feature also allows that the dimension of the rubber suspensions can be calculated to offer a right balance between break away force and penetration capacity. Other systems in the market gather two discs in the same bracket. The rubber blocs should then offer enough penetration capacity for two discs. This extra force can be excessive when just one disc meets an obstacle so the safety system loses its effectiveness.



100% maintenance-free sealed hubs.
Ovlac's own design, the discs hubs feature a double conical bearing. This allows that the large 24" discs are held by their inner side which offers a more gentle transmission of side forces towards the bracket on the frame as well as a better protection of hubs from soil projections coming from neighboring discs or wearing from contact with the soil surface.



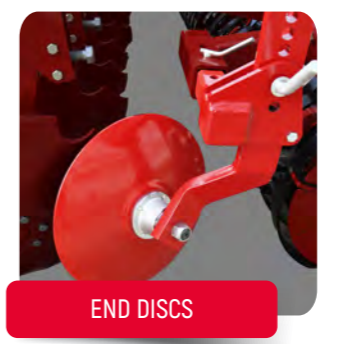
20" (510 mm) or 24" (610 mm) notched discs can be fitted on the **Maxidisc II**. Both versions are 6 mm thick for a long life.

Why should you choose small or large discs?

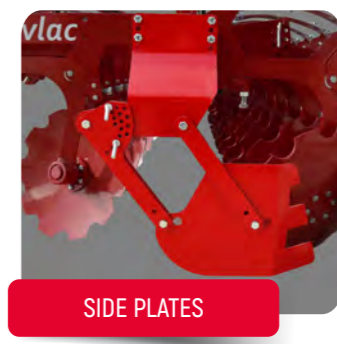
Small 20" discs turn at very high speed resulting in a very intense action of chopping and mixing.

24" discs, on the other hand, are the perfect choice when dealing with large volumes of trash or when seeking for a deeper work.

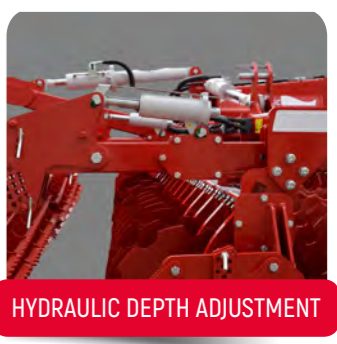
OPTIONS MAXIDISC II



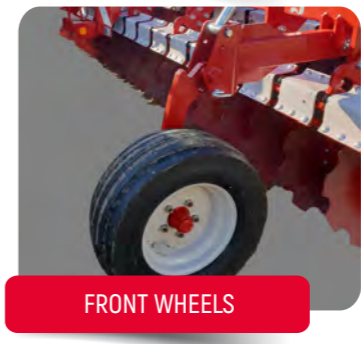
END DISCS



SIDE PLATES



HYDRAULIC DEPTH ADJUSTMENT



FRONT WHEELS



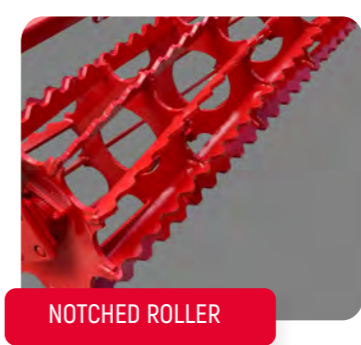
TRAILED KIT



DOUBLE FRONT WHEELS 200/60 14.5"

*ON MAXIDISC GC

ROLLERS



NOTCHED ROLLER

400 or 520 mm notched plate roller. Very good crumbling in dry soils due to its high rotation speed.
Weight: 80/90 kg/m.



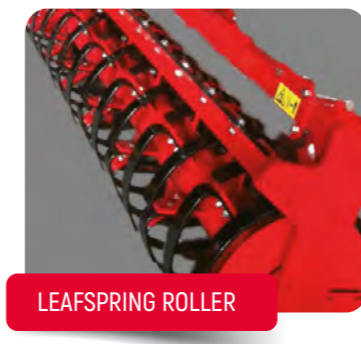
PLATE ROLLER

480 mm or 540 mm cage roller. Good leveling and depth control in light soils.
Weight: 80/90 kg/m approx.



TANDEM ROLLER

480/540 mm cage roller + 400/520 mm notched plate roller.
Weight: 140 kg/m approx.



LEAFSPRING ROLLER

Leafspring roller. Very good consolidation as well as crumbling due to vibration of the springs.
Weight: 130 kg/m approx.



"T" OR "U" ROLLER

520 mm roller for a good re-consolidation in light-to.-meidum soils. The "T" profile allows for effective breaking of clods, while the "U" profile is filled, resulting in an earth-to-earth contact perfect for wet soils.
Weight: 140 kg/m.



V-PROFILE ROLLER

V-Profile double disc roller. Optimum consolidation in stripes as well as in depth.
Weight: 290 kg/m.

Short disc harrows have become over the last years one of the fastest and more efficient ways of tillage. An intense action of chopping and mixing results in a very effective way to incorporate trash and to make weeds germinate for an ulterior final treatment.

The Maxidisc II is the last generation of short disc harrows developed by Ovlac. It gathers all the experience and know-how collected throughout almost 20 years manufacturing, testing and selling short disc harrows in many different markets and conditions.

Working angles, overload protection, hubs, bearings, tines, frame... There are a series of key factors which determine the success or failure of a short disc harrow.

The Maxidisc II meets the highest expectations for each one of these key elements.

