

Thought and
designed for the
most demanding



ovlac **maxi**disc II

ovlac

Polígono Industrial, P-163 / 165
34200 Venta de Baños
Palencia / España
t. +34 979 76 10 11
f. +34 979 76 10 22
comercial@ovlac.com
www.ovlac.com

maxidisc II

model	discs	working width m.	transport width m.	power HP	weight 20" disc Kg. (*)	weight 24" disc Kg. (*)
Maxidisc II 250/20	20	2,60 m	3,02 m	80-100	1 770	2 020
Maxidisc II 300/22	22	3,00 m	3,02 m	90-120	1 960	2 235
Maxidisc II 350/26	26	3,40 m	3,60 m	110-140	2 255	2 580
Maxidisc II 400P/30	30	4,00 m	2,55 m	130-160	2 425	2 975
Maxidisc II 450P/34	34	4,50 m	2,55 m	150-180	2 925	3 350
Maxidisc II 500P/38	38	5,00 m	2,55 m	170-200	3 010	3 710
Maxidisc II 550P/42	42	5,50 m	2,55 m	180-220	3 560	4 085
Maxidisc II 600P/46	46	6,00 m	2,55 m	200-250	3 885	4 460

(*) weight with cage roller

© all rights reserved



ovlac





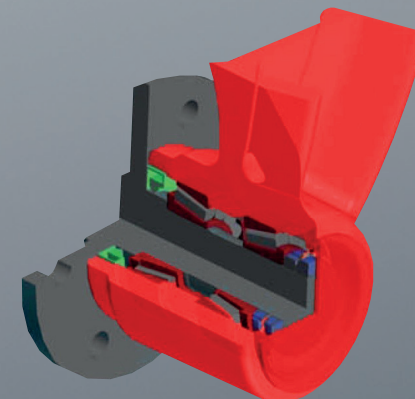
A short disc harrow
fruit of a long
experience



The **Maxidisc II** offers a solid structure calculated to stand the high forces derived from the use of 24" discs as well as big tractors. Category II and III linkage.

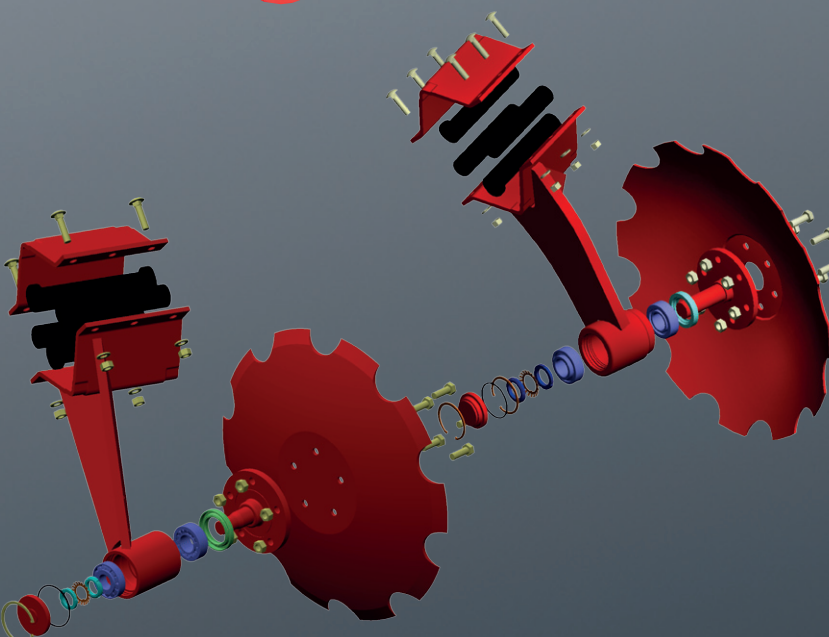


Discs are mounted on independent tines so that only the disc meeting an obstacle will trip up without affecting any other neighboring disc. This feature also allows that the dimension of the rubber suspensions can be calculated to offer a right balance between break away force and penetration capacity. Other systems in the market gather two discs in the same bracket. The rubber blocs should then offer enough penetration capacity for two discs. This extra force can be excessive when just one disc meets an obstacle so the safety system loses its effectiveness.



100% maintenance-free sealed hubs.

Ovlac's own design, the disc hubs feature a double conical bearing. This allows that the large 24" discs are held by their inner side which offers a more gentle transmission of side forces towards the bracket on the frame as well as a better protection of hubs from soil projections coming from neighboring discs or wearing from contact with the soil surface.



20" (510 mm) or 24" (610 mm) notched discs can be fitted on the **Maxidisc II**. Both versions are 6 mm thick for a long life.

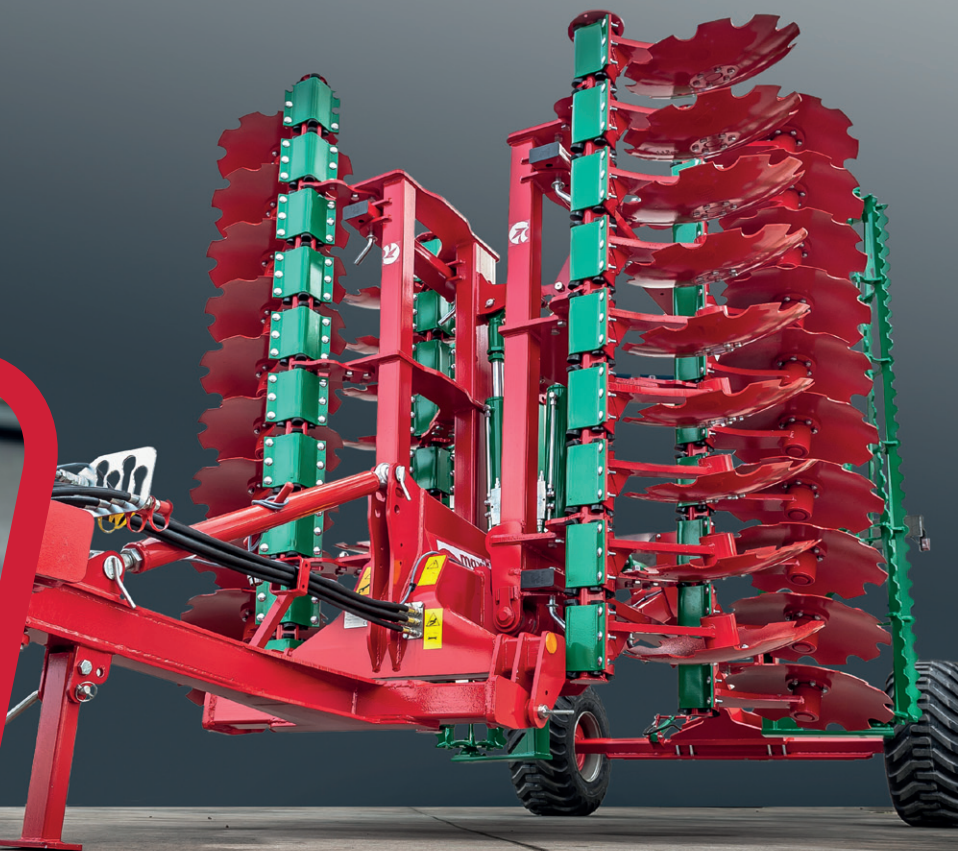
¿Why should you choose small or large discs?. Small 20" discs turn at very high speed resulting in a very intense action of chopping and mixing. 24" discs, on the other hand, are the perfect choice when dealing with large volumes of trash or when seeking for a deeper work.



Automatic lock in transport



Any mounted **Maxidisc II** can be transformed into trailed by just mounting the **Trail Kit**. The draw bar is mounted right on the three point linkage of the **Maxidisc II** and it offers a category II/III linkage on the lifting arms of the tractor. Its height can be easily adjusted by means of the tumbuckle on the third point. The wheel chassis is also mounted directly at the rear of the main frame and features hydraulic suspension as well as hydraulic or pneumatic brakes.



Safety and stability during transport on the road are guaranteed thanks to the large wheels and the automatic locking of the folding system.

Ovlac's **Maxidisc II** folds to a total width of just 2,5 m so it complies with the most strict road regulations.

options

400 mm notched plate roller. Very good crumbling in dry soils due to its high rotation speed.

Weight: 75 kg/m

480 or 540 mm cage roller. Good leveling and depth control in light soils.

Weight: 80 kg/m approx.

Leafspring roller. Very good consolidation as well as crumbling due to vibration of the springs.

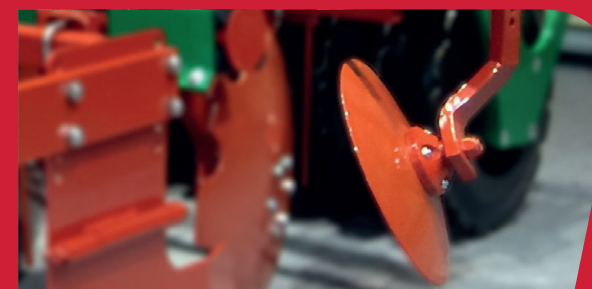
Weight: 110 kg/m approx.

500 mm rubber roller. Very good consolidation. Suitable for all kind of soils.

Weight: 120 kg/m.

V.Profile double disc roller. Optimum consolidation in stripes as well as in depth.

Weight: 300 kg/m



The side plates and end discs limit land projections outwardly to finish perfectly level.

